

CERTIFICATE OF LOCATION OF GOVERNMENT CORNER

NORTHEAST Corner of Section 5, Township 106, Range 40, 5TH P.M.

STATE OF MINNESOTA, County of MURRAY

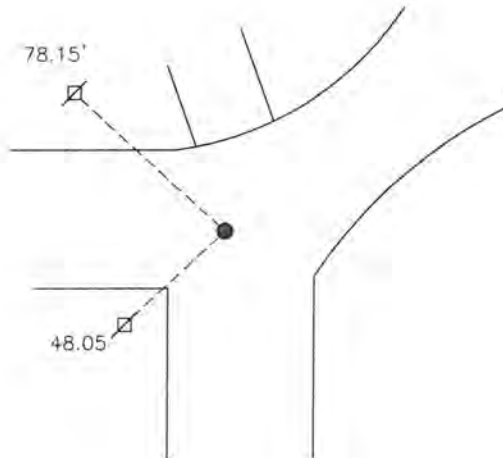
At the corner location shown on the sketch:

On 4/7/15 found a concrete monument
DATE

left monument as found, lowered monument, removed monument (explain)

On 4/7/15 placed a 5/8" iron with seal #43844
DATE

SKETCH OF REFERENCE TIES



Minnesota State Plane Coordinate
 System Murray County Datum
 NAD83 (1996)

N: 163447.538
 E: 527195.259

Nail and bottle cap in utility pole NW 78.15'
 Nail and bottle cap in utility pole SW 48.05'

Statement of evidence relative to this corner location is on back of page.

I hereby certify that this document and the data contained herein was prepared by me or under my direct supervision.

[Signature] 3/2/16
SIGNATURE DATE

Registration No. 43844

Land Surveyor, Professional Engineer
 County Surveyor, County Engineer

OFFICE OF THE COUNTY RECORDER

County of MURRAY

I hereby certify that this document was filed in the Co. Recorders office at 11:00 A..M on the 18TH day of OCTOBER A.D. 20 16

County Recorder Evelyn C. Larson

By _____, Deputy

DOCUMENT NO. _____

Statement of Evidence

In July, 1861, J.W. Myers did the original survey of the north line of the township.

On October 16, 1901, J.W. Woolstencroft recorded a stone at the corner.

On May 15, 1975, Murray County Highway Department found a concrete monument at the corner.

On April 7, 2015, Bueltel-Moseng Land Surveying found concrete monument by using ties from 1975 survey.
We set a 5/8" iron with seal #43844 over monument.